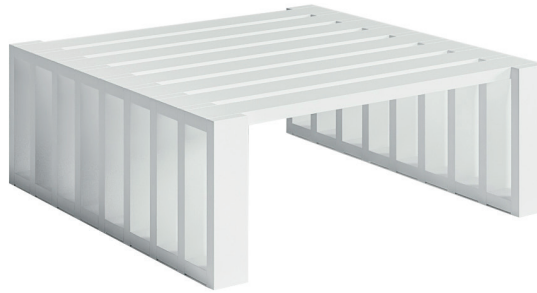
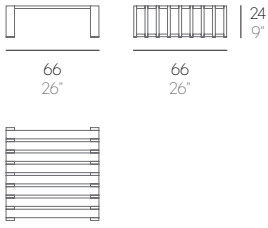


DOCKS

ROMERO VALLEJO



MÓDULO 2

Aluminio anodizado o termolacado.

MODUL 2

Eloiertes oder thermolackiertes Aluminium.

MODULE 2

Aluminium anodisé ou thermolaqué.

Estructura. Frame. Profil. Struttura. Structure. Frame

7,9 kg - 17,38 lbs 0,23 m³ - 8,12 ft³

MODULE 2

Anodized or thermo-lacquered aluminium.

MODULO 2

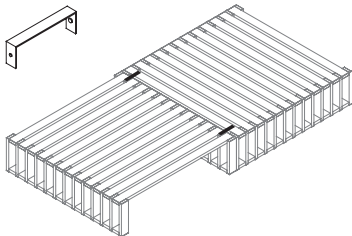
Alluminio anodizzato o termolaccato.

MODULE 2

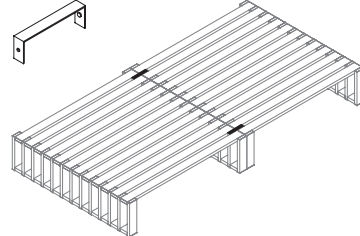
Silver or powder coated aluminium.

MATERIALES. MATERIALS. MATERIALEN. MATERIALI. MATERIAUX

ALUMINIUM



pieza unión esquina
corner connecting piece
eckverbindungsstück
giunto angolare
pièce raccordement coin



pieza unión simple
single connecting piece
einfaches verbindungsstück
giunto semplice
pièce raccordement simple

PIEZA DE UNIÓN

Acero inoxidable y termolacada.

VERBINDUNGSSTÜCK

Edelstahl und thermolackiert.

PIÈCE RACCORDEMENT

Acier inoxydable et thermolaquée.

CONNECTING PIECE

Stainless steel and thermo-lacquered.

GIUNTO

Acciaio inossidabile e termolaccato.

CONNECTING PIECE

Stainless steel and powder coated.

Para composiciones, sólo está disponible con la colchoneta asiento 66x66 cm. Ver página 3

For compositions, only is available with mat for seat in 26"x26". See page 3

Für Kompositionen ist es nur mit dem Sitzpolster 66x66 cm erhältlich. Siehe Seite 3

Pour les compositions, il est uniquement disponible avec le matela de siège 66x66 cm. Voir page 3

Per le composizioni, è disponibile solo con il cuscino del sedile 66x66 cm. Guarda la pagina 3

DOCKS

ROMERO VALLEJO

COLCHONETAS (ASIENTO, RESPALDO, REPOSABRAZOS)

Gomaespuma de poliuretano recubierta con tejido hidrófugo. Tapicería desfundable.

MATS (SEAT, BACKREST, ARMREST)

Polyurethane foam rubber covered with water-repellent fabric. Removable fabric cover.

MATRATZEN (SITZ, RÜCKENLEHNE, ARMLEHNE)

Polyurethanschaum mit wasserabweisendem Stoff überzogen. Abziehbarer Bezug.

MATERASSI (SEDILE, SCHIENALE, BRACCIOLO)

Gommapiuma di poliuretano rivestita di tessuto idrofugo. Tappezzeria sfoderabile.

MATELAS (SIÈGE, DOSSIER, ACCOUDOIR)

Polyuréthane recouverte de tissu hydrofuge. Tapisserie déhoussable.

CUSHIONS (SEAT, BACKREST, ARMREST)

Polyurethane foam rubber covered with water-repellent fabric. Removable fabric cover.

FABRICS



Náutica

Soft

Warm

measures of square seat mats:



measures of rectangular seat mats:



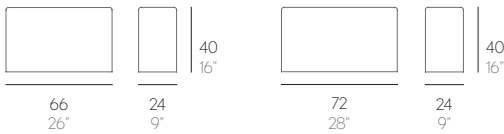
Colchoneta. Mat. Matratze. Materasso. Matela. Cushion

Seat 66x66/26"x26" |  3,08 kg - 6,78 lbs

Seat 72x66/28"x26" |  3,3 kg - 7,26 lbs

Seat 90x72/35"x28" |  4,25 kg - 9,35 lbs

Seat 90x90/35"x35" |  5,39 kg - 11,86 lbs




Colchoneta. Mat. Matratze. Materasso. Matela. Cushion

Backrest 66x24/26"x9" |  4,80 kg - 10,56 lbs

Backrest 72x24/28"x9" |  5,06 kg - 11,13 lbs



Colchoneta. Mat. Matratze. Materasso. Matela. Cushion

Armrest 90x26/35"x10" |  1,97 kg - 4,33 lbs

