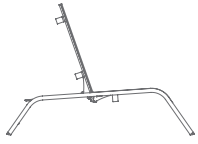


STACK

BORJA GARCÍA

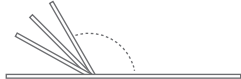
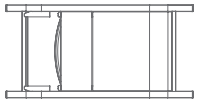


148
58"



70
28"

35
14"



117° - 137° - 158° - 180°

Respaldo reclinable.
Reclining backrest.



HAMACA RECLINABLE

Aluminio soldado termolacado.
Tela Batyline®.

VERSTELLBARE LIEGESTUHL

Geschweißten thermolackierten Aluminium.
Batyline® - Stoff.

TRANSAT INCLINABLE

Aluminium soudé et thermolaqué.
Tissu Batyline®.

RECLINING DECKCHAIR

Thermo-lacquered welded aluminium.
Batyline® fabric.

SDRAIO RECLINABILE

Alluminio saldato termolaccato.
Tessuto Batyline®.

RECLINING DECKCHAIR

Thermo-lacquered welded aluminium.
Batyline® fabric.

Estructura. Frame. Profil. Struttura. Structure. Frame

11.7 kg - 25.74 lbs 0.58 m³ - 20.48 ft³

MATERIALES. MATERIALS. MATERIALEN. MATERIALI. MATERIAUX

ALUMINIUM



9016 White 7038 Agate grey 7023 Concrete grey 7033 Cement grey 6003 Olive green 1019 Sand

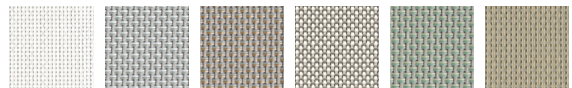


7006 Bronze 3012 Beige red 8023 Orange brown 2001 Red orange 3005 Wine red 7031 Blue grey

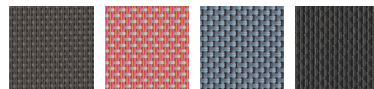


5008 Grey blue 7004 Signal grey 7043 Anthracite 8019 Grey brown 9011 Black

BATYLINE®



White Grey Stone Camel Green Sand



Bronze Terracotta Blue Anthracite



info@gandiasco.com
www.gandiasco.com

GANDIASCO