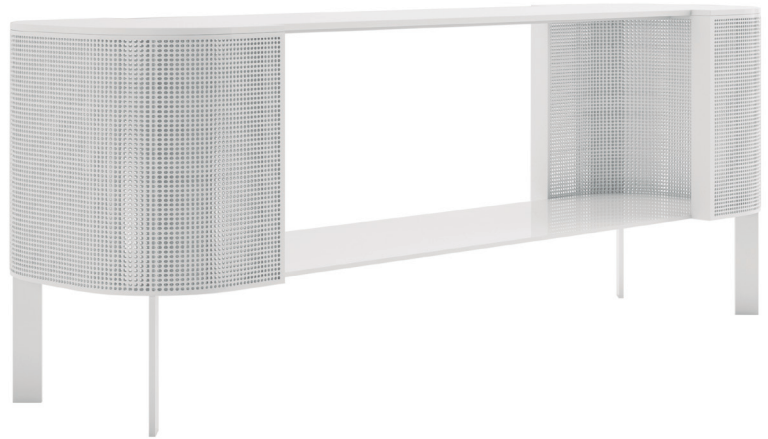
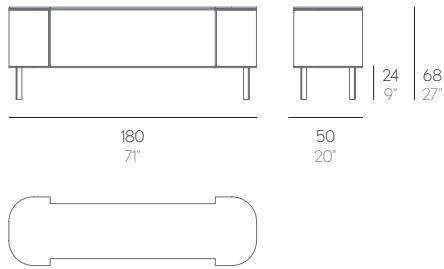


# SOLANAS

DANIEL GERMANI



## APARADOR

Aluminio soldado termolacado.  
Chapa microperforada.  
Dekton®.

## ANRICHE

Geschweißten thermolackierten Aluminium.  
Mikroperforiertem blech.  
Dekton®.

## BUFFET

Aluminium soudé et thermolaqué.  
Tôle microperforée.  
Dekton®.

## SIDEBORD

Thermo-lacquered welded aluminium.  
Micro-perforated sheet.  
Dekton®.

## CREDENZA

Alluminio saldato termolaccato.  
Lamiera microperforata.  
Dekton®.

## SIDEBORD

Thermo-lacquered welded aluminium.  
Micro-perforated sheet.  
Dekton®.

Estructura. Frame. Profil. Struttura. Structure. Frame

63 kg - 138.60 lbs    0,75 m<sup>3</sup> - 26.48 ft<sup>3</sup>

## MATERIALES. MATERIALS. MATERIALEN. MATERIALI. MATERIAUX

### ALUMINIUM



### DEKTON®

