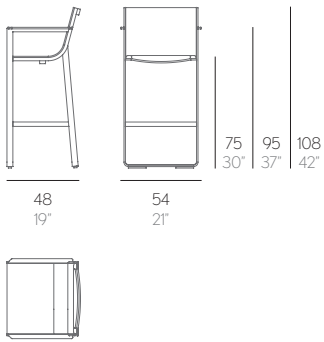


FLAT TEXTIL

MARIO RUIZ



TABURETE CON RESPALDO ALTO Y BRAZOS

Aluminio soldado termolacado.
Tela Batyline®.

HOCKER MIT HOHER RÜCKENLEHNE UND ARME

Geschweißten thermolackierten Aluminium.
Batyline® - Stoff.

TABOURET AVEC DOSSIER HAUT ET BRAS

Aluminium soudé et thermolaqué.
Tissu Batyline®.

STOOL WITH HIGH BACKREST AND ARMS

Thermo-lacquered welded aluminium.
Batyline® fabric.

SGABELLO CON SCHIENALE ALTO E BRACCIOLI

Alluminio saldato termolaccato.
Tessuto Batyline®.

STOOL WITH HIGH BACKREST AND ARMS

Thermo-lacquered welded aluminium.
Batyline® fabric.

Estructura. Frame. Profil. Struttura. Structure. Frame

10.2 kg - 22.44 lbs 0.38 m³ - 13.42 ft³

MATERIALES. MATERIALS. MATERIALEN. MATERIALI. MATERIAUX

ALUMINIUM



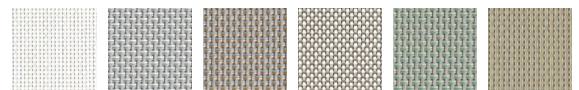
9016 White 7038 Agate grey 7033 Cement grey 1019 Sand 7006 Bronze 7031 Blue grey

Resto de colores de aluminio disponibles con un incremento del 20%. Consultar a nuestro departamento Comercial.

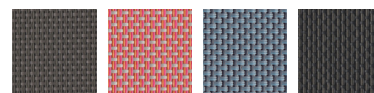
Other aluminium colours are available at a 20% price increase over. Please contact our Commercial department

7043 Anthracite

BATYLINE®



White Grey Stone Camel Green Sand



Bronze Terracotta Blue Anthracite



info@gandiablascó.com
www.gandiablascó.com

G A N
D I A
B L A
S C O