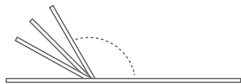
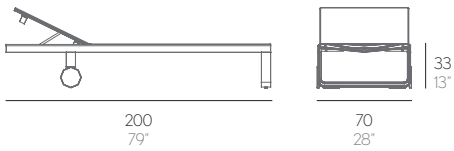
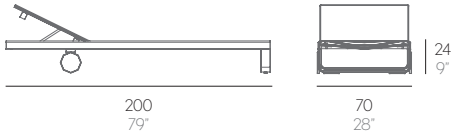


FLAT TEXTIL

MARIO RUIZ



122° - 135° - 150° - 180°

Respaldo reclinable. Toalla incluida.
Reclining backrest. Towel included.



TUMBONA / TUMBONA ALTA

Aluminio soldado termolacado.
Tela Batyline®.

CHAISELONGUE / HIGH CHAISELONGUE

Thermo-lacquered welded aluminium.
Batyline® fabric.

LIEGESTUHL / HOHER LIEGESTUHL

Geschweißten thermolackierten Aluminium.
Batyline® - Stoff.

LETTINO / LETTINO ALTO

Alluminio saldato termolacato.
Tessuto Batyline®.

CHAISE LONGUE / CHAISE LONGUE HAUTE

Aluminium soudé et thermolaqué.
Tissu Batyline®.

CHAISELONGUE / HIGH CHAISELONGUE

Thermo-lacquered welded aluminium.
Batyline® fabric.

Chaiselongue

Estructura. Frame. Profil. Struttura. Structure. Frame

19 kg - 41.8 lbs 0,74 m³ - 26.13 ft³

High chaiselongue

Estructura. Frame. Profil. Struttura. Structure. Frame

19,5 kg - 42.9 lbs 0,74 m³ - 26.13 ft³

Funda protectora. Protective cover. Schutbezug.

Fodera protettiva. Housse de protection.

MATERIALES. MATERIALS. MATERIALEN. MATERIALI. MATERIAUX

ALUMINIUM

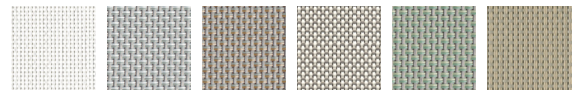


9016 White 7038 Agate grey 7033 Cement grey 1019 Sand 7006 Bronze 7031 Blue grey

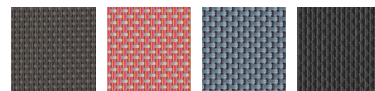
Resto de colores de aluminio disponibles con un incremento del 20%.
Consultar a nuestro departamento Comercial.
Other aluminium colours are available at a 20% price increase over.
Please contact our Commercial department

7043
Anthracite

BATYLINE®



White Grey Stone Camel Green Sand



Bronze Terracotta Blue Anthracite



GANDIABLASCALCO

info@gandiablascalco.com
www.gandiablascalco.com